



Mažeikiai, 2024 m.

About us

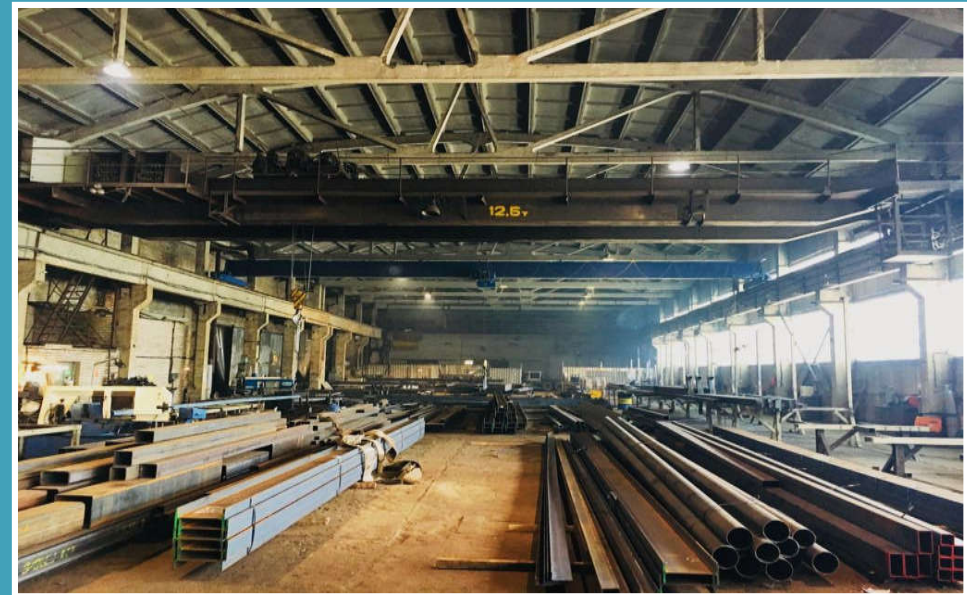


- JSC Litvija started activity in 2014 03
- Company age (almost 10 years);
- Total montly Capacity is 500 tones;
- Current number of Employees 100;
- Certificates LST EN 1090 EX2; EX3; ISO 3834;

10000 m² workshop area, which includes:

- *Main area for metal contruction fabrication*
- *Separated area for sheet metal fabrications and roolled production*
- *Separated area for small structures; 600m²*
- *shot-blasting camera, 5x18 m.;*
- *painting room, 1000 m².;*
- *Raw material warehouse, 1000 m².;*
- *6 cranes 12.5 t.; 10 t.; 5 t.; 3 t.;*

- *Separated workshop in Pašilēs village, 1500 m².;*



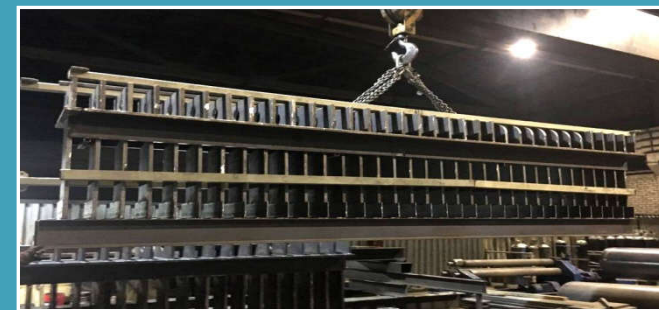
About us



Main workers: qualified metal welders, assemblers, pipe fitters, locksmiths, metal workers, engineers. All welders are certified according to LST EN-287-1 standard.

Main products:

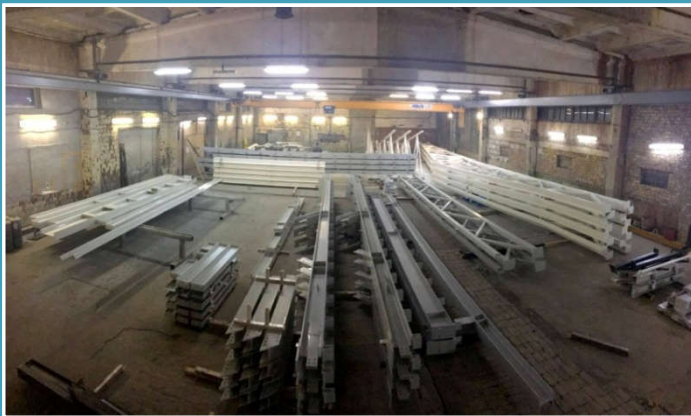
- standard building, industrial or technology part constructions,
- non standard or huge constructions, constructions for bridges, industrial buildings,
- silo, rezervuars and tanks, containers, ship parts, piping prefabrication.
- small fabrications such as platforms, stairs, supports, etc.



Painting camera 800 m²



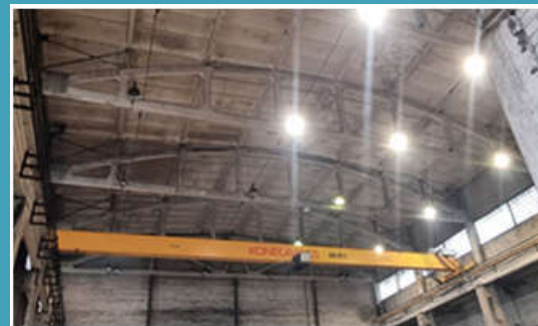
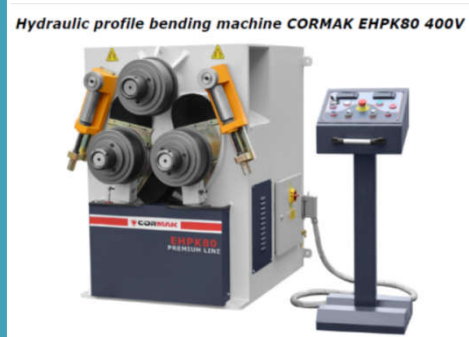
- Graco PRO Airless Paint Sprayers;
- Main paints: HEMPEL, INTERNATIONAL, TIKKURILA, SIGMA;
- C1-C5 corrosion class; also there are partners for HDG and fire painting.



Workshop for manufacturing



- Metal cutting machine. Max diameter - 610x440;
- MOST MSR self-adjusting rollers;
- Plazma cutting machine;
- Curving machine M2032M;
- Hydraulic profile bending machine
- Rotator machine
- Konecranes



New investment in 2022 m. into machinery and technology



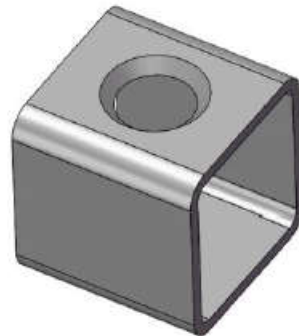
- Max tube weight 150 kg.
- Max tube length 6 m.
- Laser cutting machine, max diameter 22 cm. for round tube and 15 cm. for square.
- Positioning Accuracy $\pm 0,03$ mm.
- [Our lazer video](#)
- [Presentationo video](#)



Lazer possibilities

- Very smooth edges

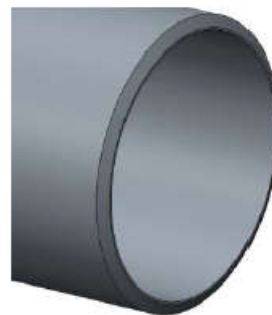
c. Material type:
rectangular pipe
Cutting material:
carbon steel
Groove type: round
hole groove



50x50x3
- 250x250x10



d. Material type:
round pipe
Cutting material:
carbon steel
Groove type: 45 °
groove



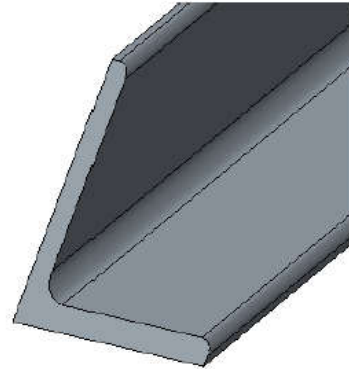
φ50X4
- φ300X10

Lazer possibilities

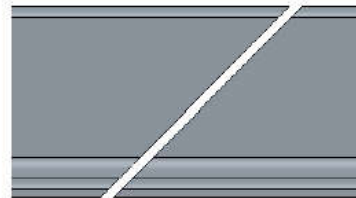


- Very smooth edges

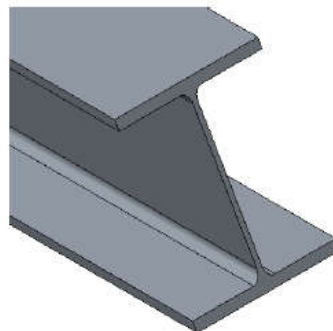
i. Material
appearance: angle
steel
Cutting material:
carbon steel
Groove Type: Bevel
Cut



5# - 25#
 $4\text{mm} \leq T \leq 10\text{mm}$



j. Material
appearance: H-
shaped steel
Cutting material:
carbon steel
Groove Type: Bevel
Cut



10# - 25#
(HW, HM, HN)

2023-2024 m. investmens into new machinery and technology



- Laser cutting mashines
- Laser cutting mashine, max diameter 50 cm. for round tube and 35 cm. for square.
- Max tube weight 1500 kg.
- Positioning Accuracy $\pm 0,05$ mm.
- Standart cutting length 15 m.
- [Presentation video](#)



Lazer possibilities

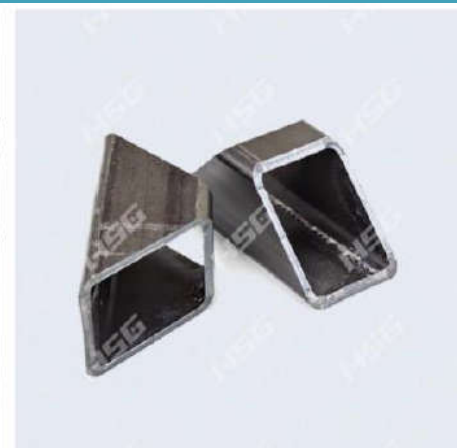
- Very accurate cutting at any shape



∅100mm*5mm



□ 80mm*10mm*2mm



□ 60mm*60mm*5mm



Round tube



L shape



U shape

Lazer possibilities

- Very smooth edges



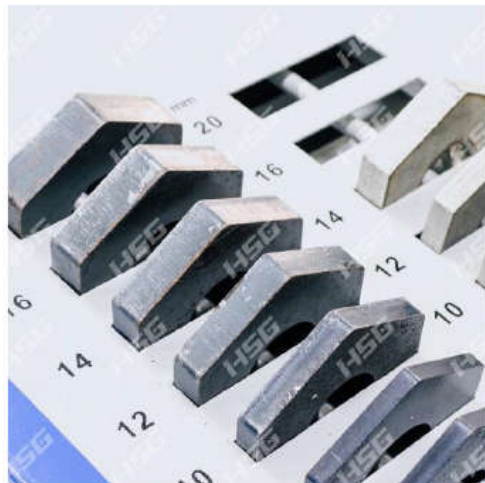
Shining Cutting Sample



Stainless Steel



Precise Cutting Sample



Carbon Steel



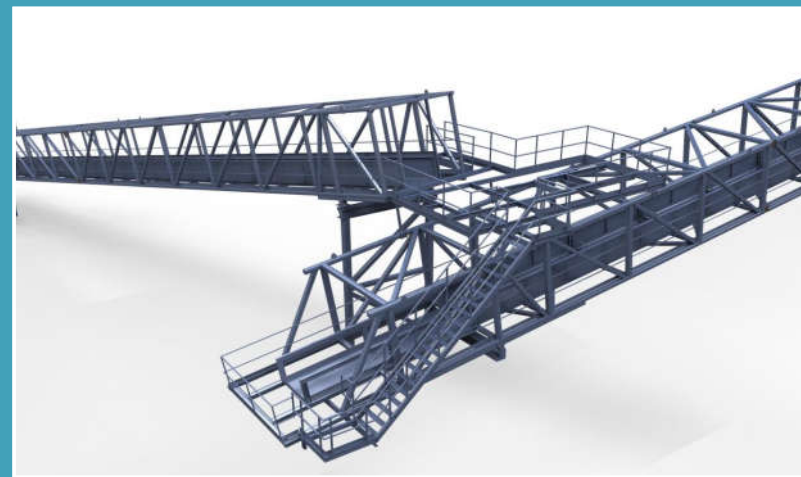
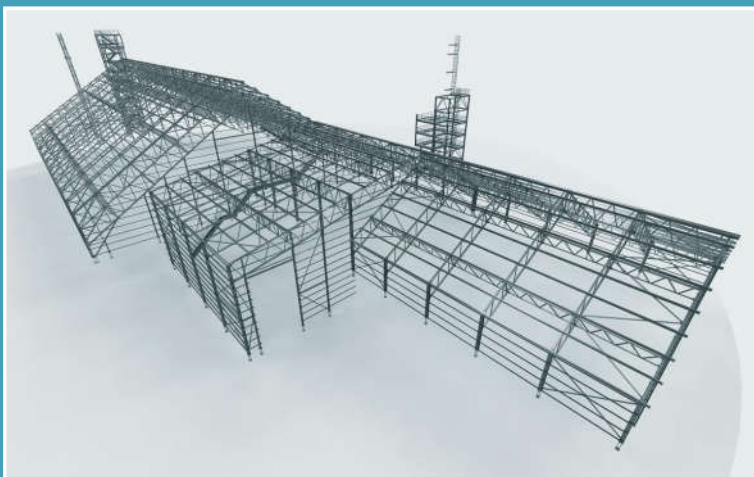
Mini Bicycle Sample



Aluminum

Our services

Calculation of constructions;
3D design;
Preparation of workshop drawings;
Support of production and installation works;



Our works

Project: Trade center
Location: Stockholm, Sweden; Riga, Latvia
Metal consumption: 180 t.
Scope of work: metal production



Our works

Project: Warehouse for storage of frozen fish
Location: Latvia
Metal consuption: 260 t.
Scope of work: metal production HDG



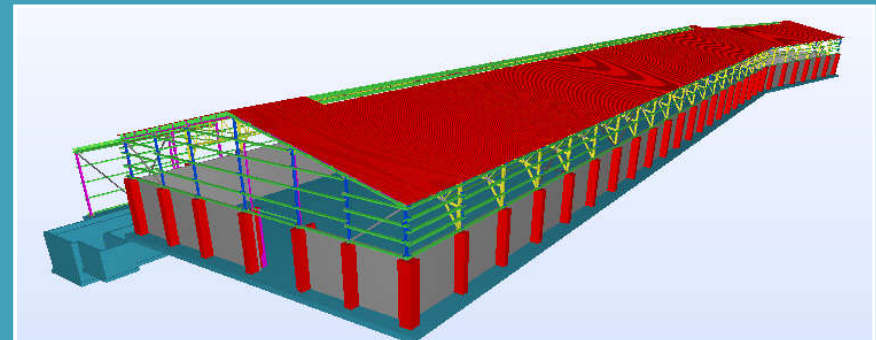
Our works

Project: AGRO industry sector

Location: Latvia

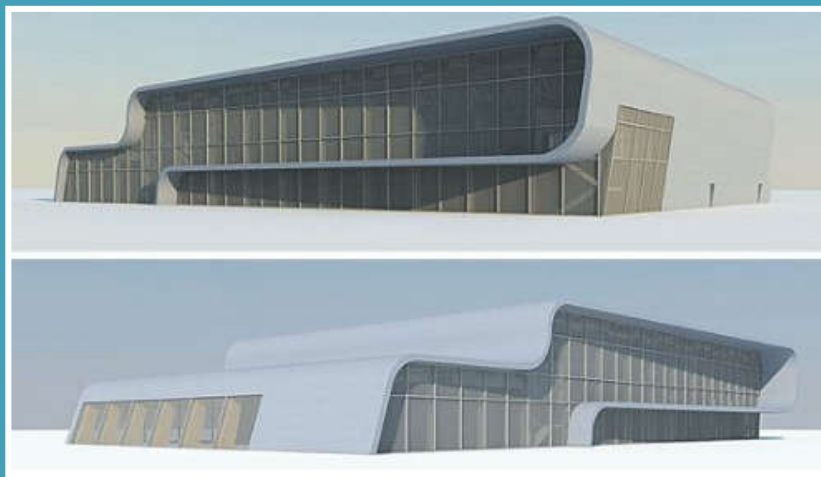
Metal consumption: 180 t.

Scope of work: metal production



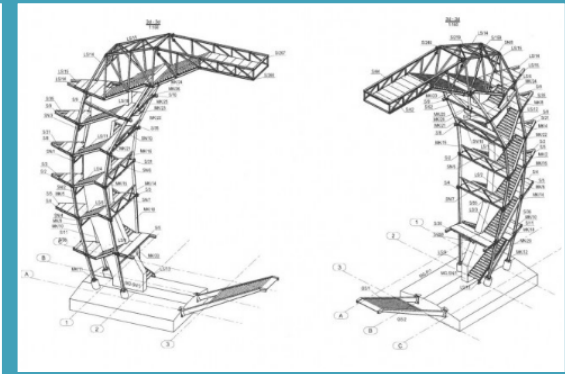
Our works

Projects: Housing development
Location: Lithuania
Total Metal consumption: 480 t.
Scope of work: production, assembly



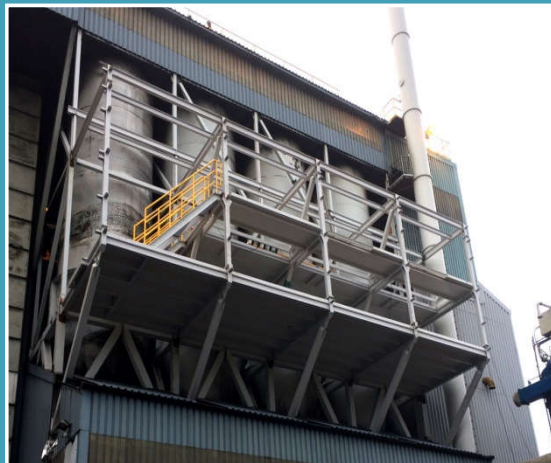
Our works

Project: Reviews tower
Location: Biržai, Lithuania
Metal consumption: 50 t.
Scope of work: metal production



Our works

Project: Industrial service platforms
Location: Kristiansand, Oslo; Riga, Latvia
Metal consumption: 40 t.
Scope of work: metal production



Our works

Project: Fridge building; Administrative building

Location: Klaipėda, Kaunas, Lithuania

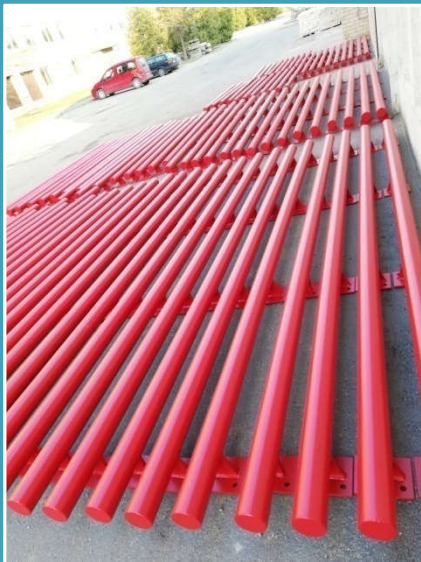
Metal consumption: 300 t. and 50 t.

Scope of work: production and installation



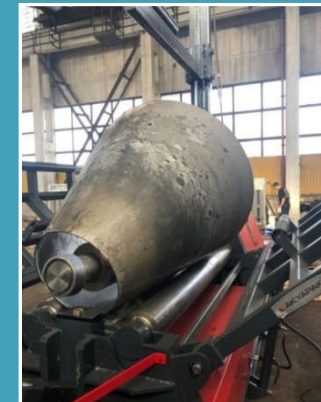
Our works

Project: Un-standard fabrications
Location: Germany, USA, Norway
Scope of work: metal production



Our works

Project: Silos, tanks manufacturing
Location: Sweden, Norway



Our works

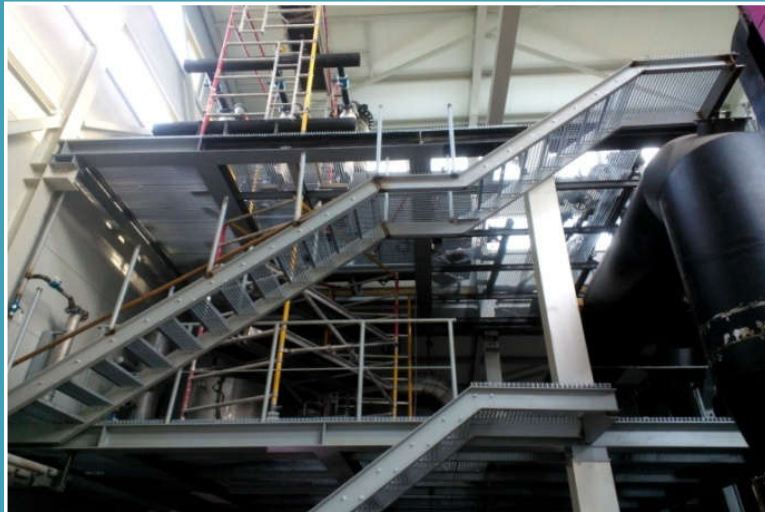
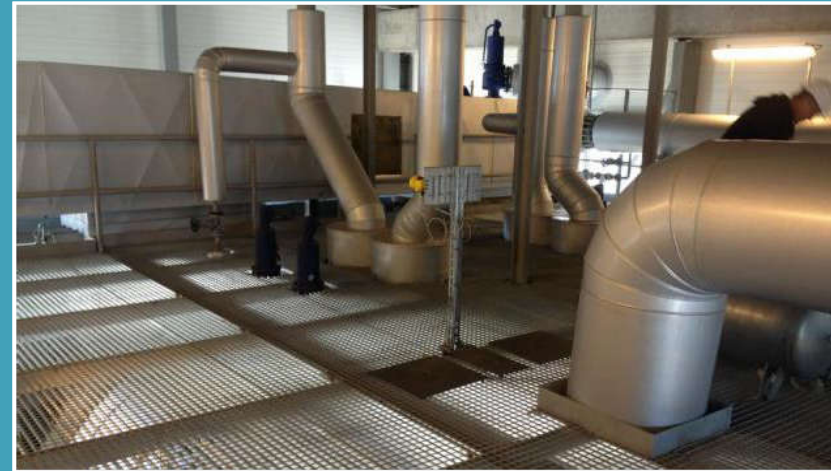
Project: Biofuel heating station 25MW
Location: Klaipeda ship port, Lithuania
Metal consumption: 40 t.
Scope of work: production, assembly



Biofuel heating station (25MW, Klaipeda ship port) – in project 30 welders and pipe fitters were working. Total weldinches amount 1000.

Our works

**Project: Biofuel heating station 8 MW,
Location: Pasvalys, Lithuania
Metal consumption: 25 t.
Scope of work: production, assembly**



Our works

Project: UAB "Orion Global PET" biofuel heating station

Location: Klaipeda, Lithuania

Metal consumption: 68 t.

Scope of work: production, assembly



UAB "Orion Global PET" biofuel heating station (Klaipeda, 2015, 18 MW oil boiler)
– 20 people worked, finished after 6 months.

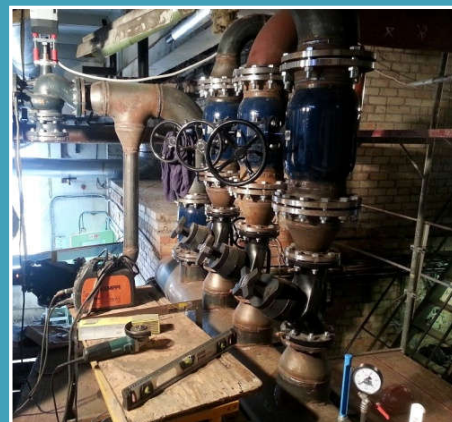
Our works

Project: 'AB "ORLEN Lietuva" GP-2 VISBREAKER HEAVY
DIESEL SUPPLY SCHEMES REPLACEMENT

Other Projects: Cooling system

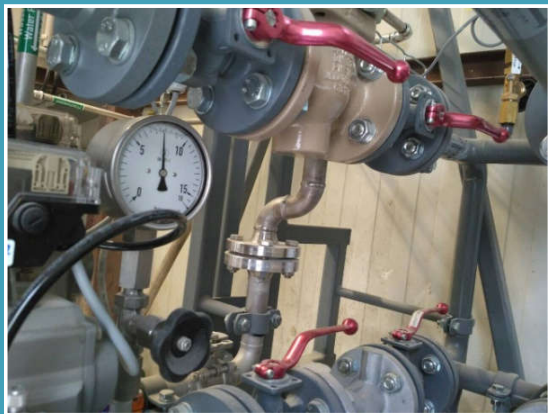
Location: Mažeikiai, Lithuania

Welded and installed 2800 welding inches.



Our works

Project: pipe production
Location: Hannover, Germany
Scope of work: pipe erection, welding.



Our works

Project: pipe production
Location: Kristiansand, Norway
Metal consumption: 20 t.
Scope of work: pipe production



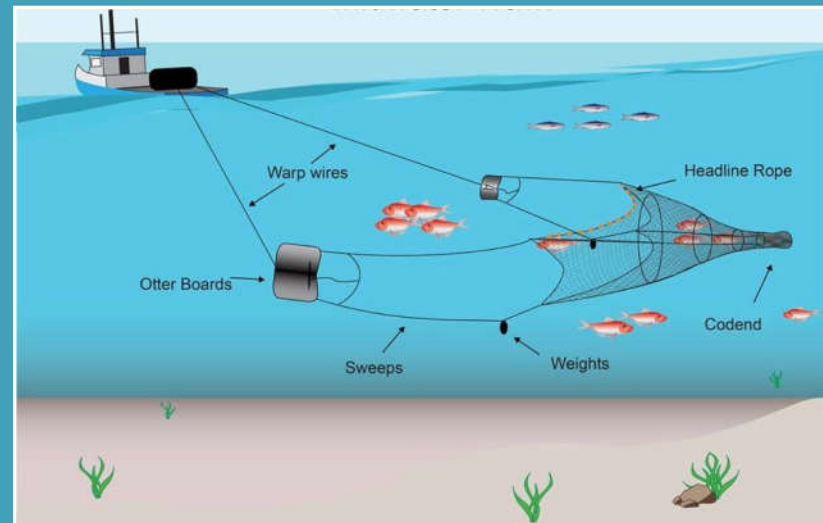
Our works

Project: Cogeneration Power Plant
Location: Kaunas, Lithuania (2018)
Metal consumption: 700 t.
Scope of work: production



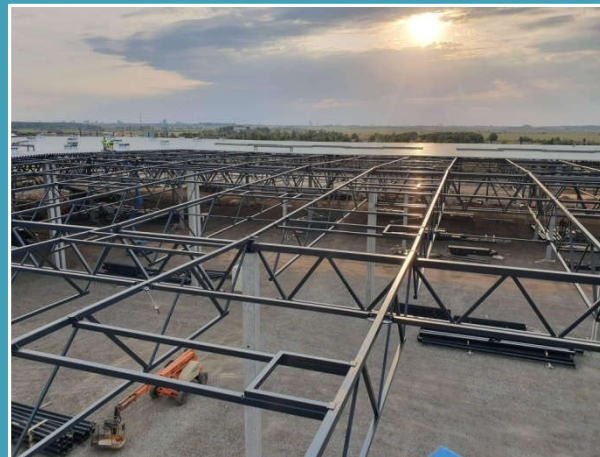
Our works

Project: trawl doors for fishing industry
Location: Iceland, all Europe
Scope of work: production



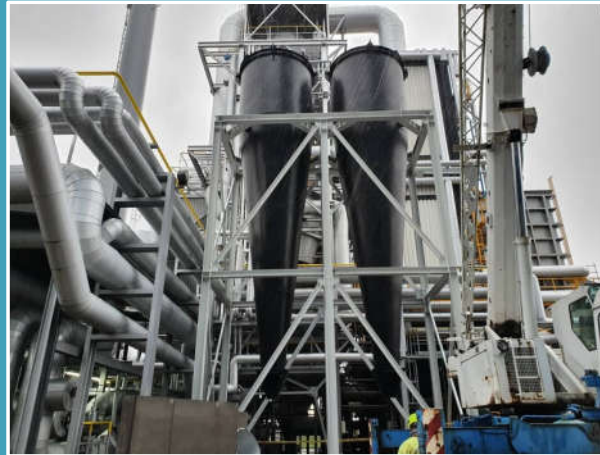
Our works

Project: SBA Logistic center
Location: Klaipėda, Lithuania (2019)
Scope of work: 500t production and installation



Our works

Project: UAB Orion Global pet
Location: Klaipėda, Lithuania (2019)
Scope of work: manufacturing and installation of
Silos/Rezervuars, Ducts and Supports



Our works

Project: Electricity industry

Location: Sweden (2020)

Scope of work: metal construction manufacturing

Project: Mining industry

Location: Sweden (2020)

Scope of work: manufacturing 3 parts for 8 t.



Our works

Project: Aircraft base
Location: Karmėlava, Kaunas (2020)
Scope of work: manufacturing and installation 350 t.



Our works

Installation of concrete structures

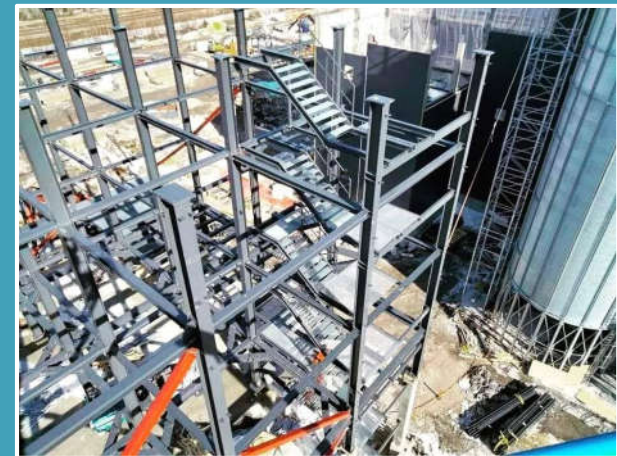
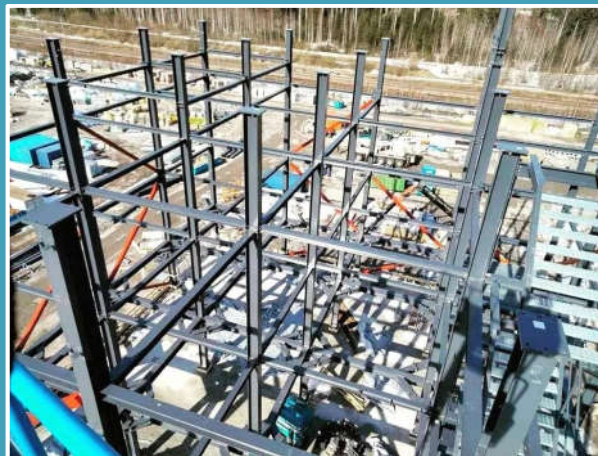
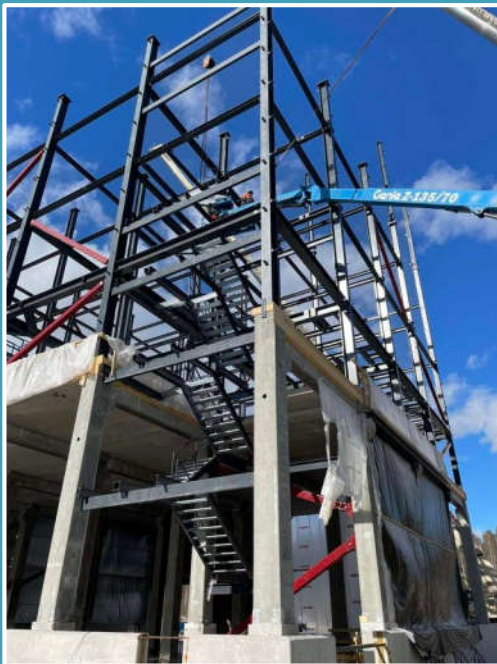


Our works

Project: World's leading Malting company

Location: Lahti, Finland (2022)

Scope of work: manufacturing and installation 700 t.

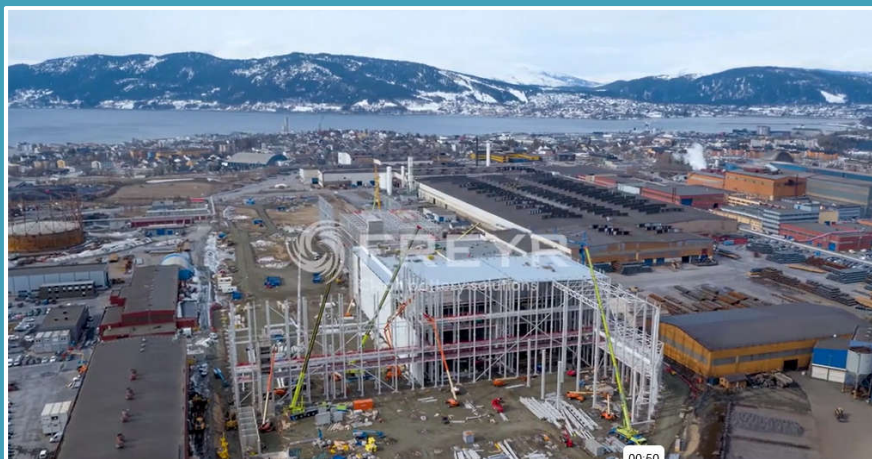


Our works

Project: "Giga Arctic battery" factory which was build in Norway North (2022-2023)
Scope of work: manufacturing more than 1600 t.



Project was exclusive because of trusses and columns size, for ex. the trusses are made of sheets 1 pcs. - 16 m*4 m; 16 t.



Our works

Project: „Maxima logistic center“, Vilnius Lithuania
Scope of work: manufacturing more than 600 t.



Our instalation equipment:

- Niftylift HR21 mobile work platform (lifting height 18.8 m.; reach 13 m.; lifting weight 225 kg.)
- Haulotte X16TPX mobile work platform (lifting height 13.44; reach 11.80; lifting weight 230 kg.)
- Mercedes Benz liebherr mobile crane (lifting capacity 30000 kg., lifting height 26 m.)
- Faun-Werke KF mobile crane (lifting capacity 63000 kg.)



Our transportation equipment:

- Two trucks with tilt trailer.
- Two flatbed trailers.



Logistics services:

- Land transport (standard lorry, Non-standard cargo, platforms)
- Sea transport (products are loaded directly to the ship)



Export directions



FROM MAŽEIKIAI TO:



NEAREST SEAPORTS

- Klaipėda's Harbor 120 km
- Riga's Harbor 175 km
- Ventspils Harbor 150 km



NEAREST AIRPORTS

- Palanga Airport 110 km
- Riga Airport 155 km



Contacts



JSC "LITVIJA"

<http://www.litvija.lt/>

Gamyklos 31G str.
Mazeikiai, LT-89213
Lithuania

Mob. +370 693 35687
C.C.: 303231481
VAT: LT100009411215

c/a LT13 4010 0510 0188 4581
AB LUMINOR, code 40100

Director

Monika Blažaitė
Mob. +370 653 84910
Email: monika@litvija.lt

Project Manager

Marius Žalimas
Mob. +370 684 52659
Email: marius@litvija.lt

Head of Production

Mindaugas Majauskas
Mob. +370 685 09308
Email: gamyba@litvija.lt

Head of Personnel

Agnė Petuškinienė
Mob. +370 655 00639
Email: personalas@litvija.lt